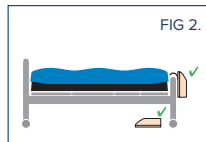
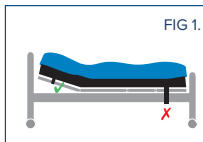


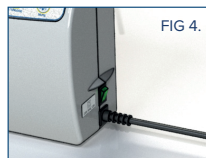
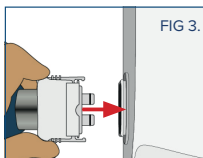
**TO BE USED IN CONJUNCTION WITH THE FULL INSTRUCTIONS FOR USE FOR THIS PRODUCT. THIS QUICK GUIDE DOES NOT REPLACE THE FULL DOCUMENT.**

## Apollo II Standard Mattress

The mattress is intended to support a single patient who is up to 200kg in weight and 185cm in height. For those patients of a very low weight, typically less than 40kg and a physical size less than 146cm, clinical judgment is to be used to determine suitability. A lower (or upper) age limit is not defined as it depends on the physical size of the patient in relation to the proportions of the mattress and bed frame.



- **Mattress only** - for profiling beds, it is essential that straps are secured around the movable sections of the bed frame - damage will be incurred when profiled if secured to fixed parts of the frame (FIG 1).
- **Cushion only** - It is the responsibility of the carer to ensure the chair is suitable for product compatibility and the safety of the patient. Position the cushion with the pipes at the rear of the chair
- To avoid any risk of damage to the mattress/cushion, ensure there are no sharp objects which may come into contact with it.
- Position the control unit by hanging the hooks over the foot board. If there is no foot board or the cushion is in use, place the unit on the floor with the front facing upwards. Ensure the rear of the unit is not obstructed by carpet, rugs etc. It is advisable to place the unit on a firm surface (FIG 2).



- Connect the mattress/cushion to the control unit (FIG 3).
- Plug in and switch on (FIG 4).

## Apollo Junior Mattress

The mattress is intended to support a single patient who is up to 178kg in weight and 155cm in height. For those patients of a very low weight, typically less than 40kg and a physical size less than 125cm, clinical judgment is to be used to determine suitability. A lower (or upper) age limit is not defined as it depends on the physical size of the patient in relation to the proportions of the mattress and bed frame.

## Apollo II Dynamic Cushion

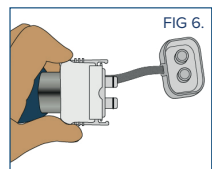
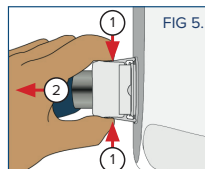
The cushion is intended to support a single patient who is up to 115kg in weight. A lower (or upper) age limit is not defined as it depends on the physical size of the patient in relation to the proportions of the cushion and the platform. Clinical judgement is to be used to determine patient suitability.

- The mattress/cushion will start to inflate. Inflation can take up to 45mins. Once inflated, ensure the straps attaching the mattress/cushion to the bed frame/chair are secure and hold the device in place. Secure sheets loosely enough to ensure they do not interfere with cell alternation.

## Transport Mode

You can achieve up to 8 hours transport time by carrying out the following procedure:

- Disconnect the umbilical cord from the power unit by squeezing the two tabs and pulling away (FIG 5).
- Seal using the cap marked 'Transport' (FIG 6).
- Switch off the control unit.



## CPR - mattress only

- Rapid deflation of the mattress may be required for emergency treatment or system deflation. The CPR dial is located at the foot end of the mattress.
- Rotate the CPR dial to the open position (FIG 7 overleaf), once done the entire system will rapidly deflate.
- To re-inflate, turn the CPR dial to the closed position (FIG 8 overleaf).
- Wait for the mattress system to reach optimal pressure prior to a return to normal use.

**TO BE USED IN CONJUNCTION WITH THE FULL INSTRUCTIONS FOR USE FOR THIS PRODUCT. THIS QUICK GUIDE DOES NOT REPLACE THE FULL DOCUMENT.**

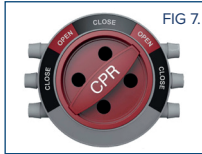


FIG 7.

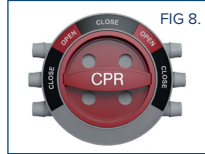


FIG 8.

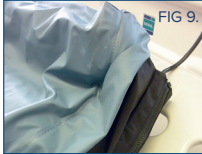


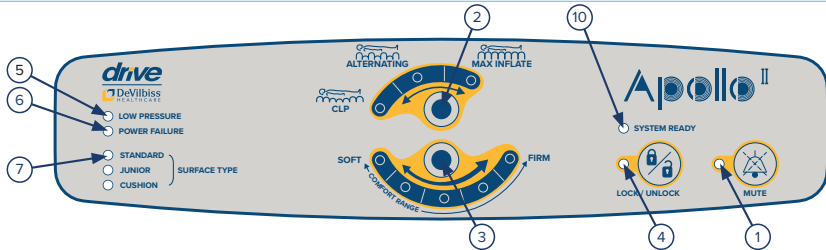
FIG 9.



FIG 10.

## Mattress Cable Management

- To reduce a risk of trip hazards, route the mains cable down the length of the mattress using the integral routing sheath. Detach the pop studs from the sheath, insert the cable and reattach all studs down the full length of the sheath (FIG 9).
- Always ensure cable is unplugged from mains power before moving the bed. It is advised not to wrap the cable tightly but to leave some slack (FIG 10).



No.	Symbol	Description
1		<b>Alarm Mute:</b> Mutes the audible signal for 20 minutes. A orange light indicates the unit is muted.
2		<b>Therapy mode:</b> 3 modes are available, PRESS BUTTON 2 to change between CLP (Constant Low Pressure), ALTERNATING AND MAX INFLATE a blue light will indicate the current mode selected.
3		<b>Comfort Control:</b> Can be adjusted by manually adjusting the cell pressure up or down. Press button 3 to increase or decrease pressure. A blue LED will illuminate to indicate which comfort setting is selected.
4		<b>Lock / Unlock:</b> The control unit will automatically lock after 2 minutes of inactivity. To unlock press the button for 3 seconds. A blue light indicates the unit is locked.

No.	Symbol	Description
5		<b>Low Pressure Indicator:</b> An amber indicator illuminates and an audible signal sounds if the pressure becomes unacceptably low.
6		<b>Power Failure Indicator:</b> Illuminates if power is lost.
7		<b>Surface Type Indicator:</b> Illuminates when surface type is detected.
8		<b>ON/OFF Switch:</b> Turns system on and off.
9		<b>Comfort Controls:</b> All pressure adjustment controls flash whilst system is calibrating.
10		<b>System Ready Indicator:</b> Illuminates when the system is ready.



**APOLLO II  
INFORMATION**